

# KAWIN MANACH KAKWETWEN\*

Kakwechim kimaskikiwiniim,  
maskikwe nanta kaya maskikiini  
kamiikwech

**1**

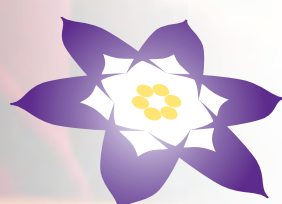
Ani mwechi  
esiyayaan?

**2**

Ani ke  
isichikeyaan?

**3**

Andas wini ke  
onchi tootamaan?



MANITOBA INSTITUTE  
FOR PATIENT SAFETY\*

[www.safetoask.ca](http://www.safetoask.ca)

\*Trademarks owned by the Manitoba Institute for Patient Safety Inc.